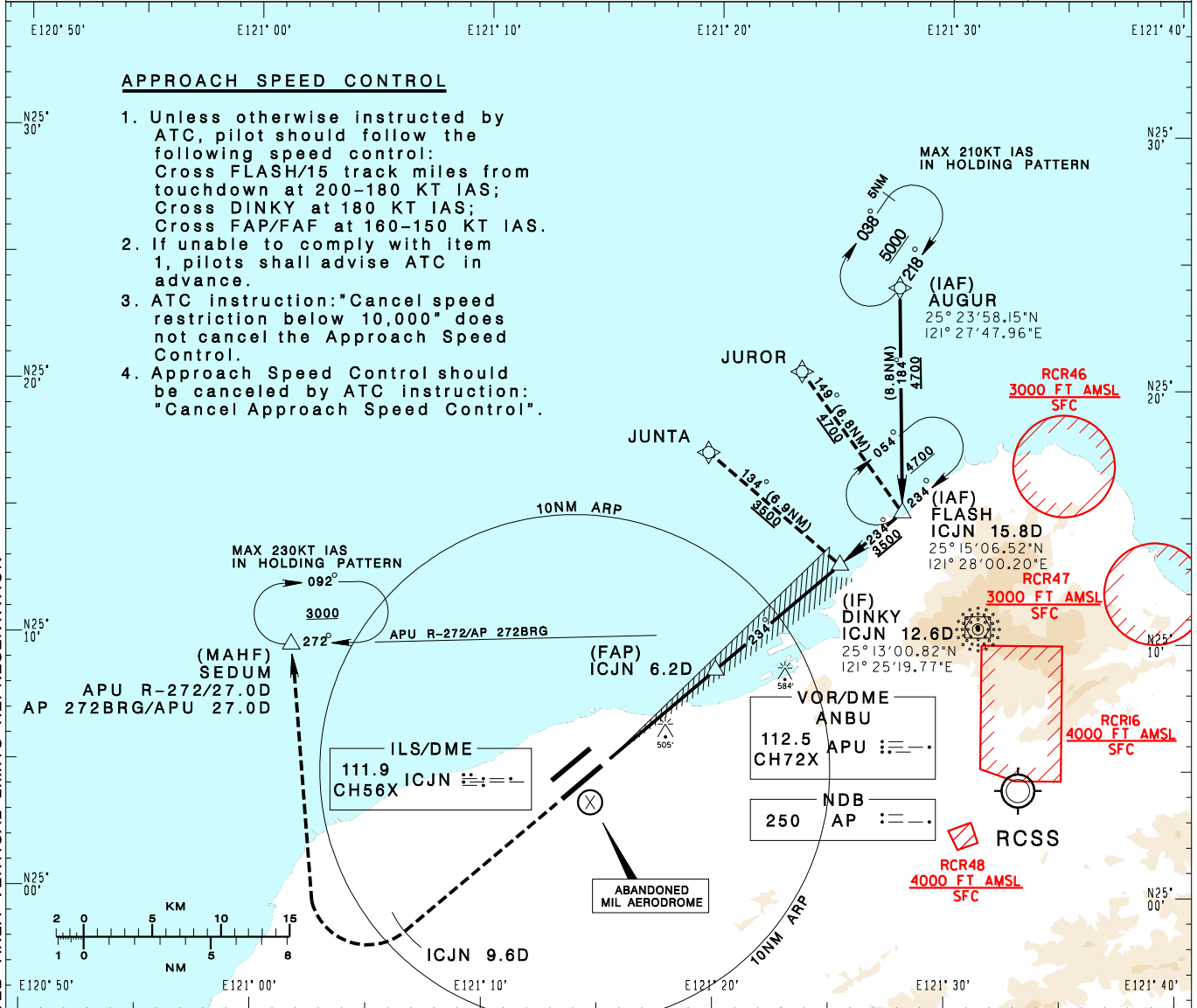


臺灣桃園國際機場
TAIPEI/TAIWAN TAOYUAN INTL AD

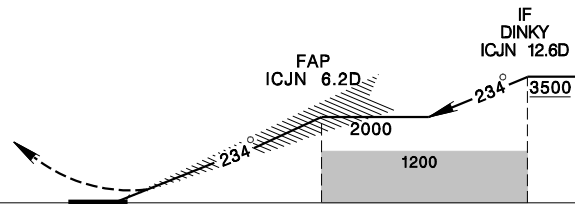
RCTP
ILS RWY23L (CAT II)

TAIPEI APP 125.1 128.5 125.6	TAIPEI TWR 118.7 129.3	ATIS 127.6	VAR 5° W 	
Apt Elev: 108'	Rwy23L DTHR Elev: 96'	Trans Level: FL130		Trans Alt: 11,000'
BEARINGS ARE MAGNETIC; DISTANCES ARE NAUTICAL MILES; ELEVATIONS, HEIGHTS IN FEET				

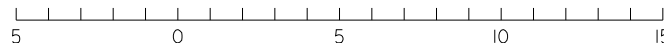


MISSED APCH:
CLIMB ON HDG 234 UNTIL ICJN 9.6D,
THEN TURN RIGHT DIRECT TO SEDUM,
MAINTAIN 3000 AND HOLD.

GP 3°
RDH 55



NM FROM ICJN



MINIMA (OCA IN FT, VIS IN M, OCH IN FT)

CATEGORY	A	B	C	D
STRAIGHT IN	206/RVR300 110	224/RVR300 128	235/RVR300 139	250/RVR300 154

NOTE
1. CIRCLING NOT AUTHORIZED.
2. ATS SURVEILLANCE REQUIRED FOR AUGUR TO FLASH AND MISSED APCH SEGMENTS.

*DME REQUIRED.

CHANGES: NEW PAGE NUMBER, UPDATE RESTRICTED AREA VERTICAL LIMITS REPRESENTATION